



STAB-IT II



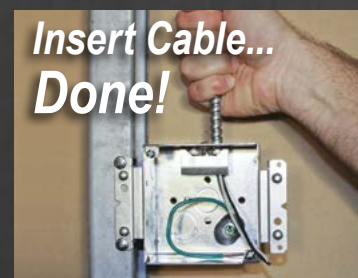
***The Fastest Way to Terminate MC Cable
Now Even Better!***



Prepare Cable

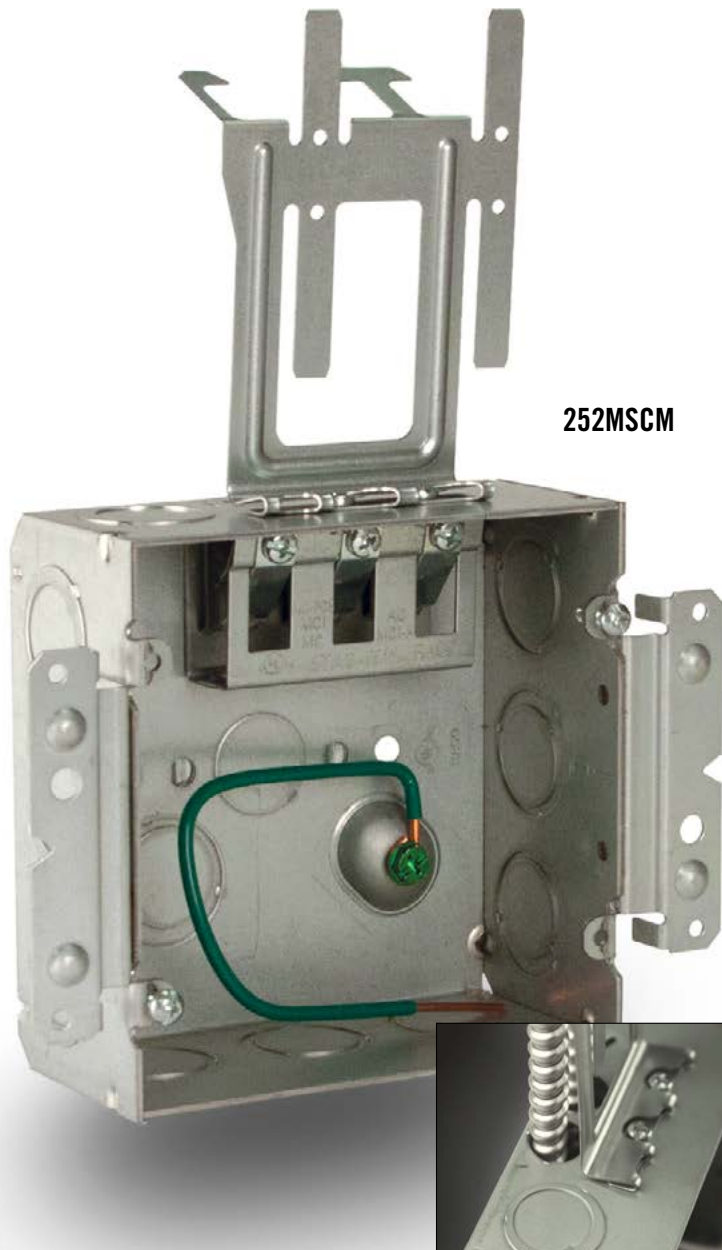


Remove Priout



***Insert Cable...
Done!***

STAB-IT® II



252MSCM

With STAB-IT® II electrical boxes, RACO® expands our line of boxes with built-in cable connectors for flexible armored cable. Our unique connector locks cable in place quickly and easily to increase production on every job. Larger size boxes and improved connector design offers even more flexibility and productivity than the original.

Application

- For any job using flexible armored cable (see selection chart on facing page)
- Ideal for Pre-Fab

Product Features

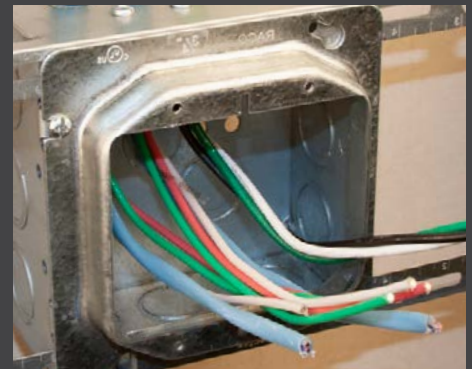
- Designed for quick installation of flex, MC, MCI, MCI-A, MC-PCS AC, and HCF Cable
- Accepts cable sizes from 14/2 up to 10/3 for most cable types
- **3 TIMES FASTER than traditional connectors**
- 4-11/16" sq. boxes are 2-1/8" deep and include 1 or 2 STAB-IT II connectors
- Each STAB-IT II connector accommodates three cables
- Available with built-in cable management clip, offering first means of support
- **UL listed for use without a plastic bushing (except for AC Cable)**
- Available with "M" style brackets for stud mounting
- Pre-installed 8" solid #12 pigtail for faster installation
- Suitable for use without a bonding jumper in circuits up to 600 volts
- Improved design allows each cable to easily be removed, allows connector to be reused
- cULus Listed
- Designed in USA



Re-designed connector accepts 3 cables, each removable individually

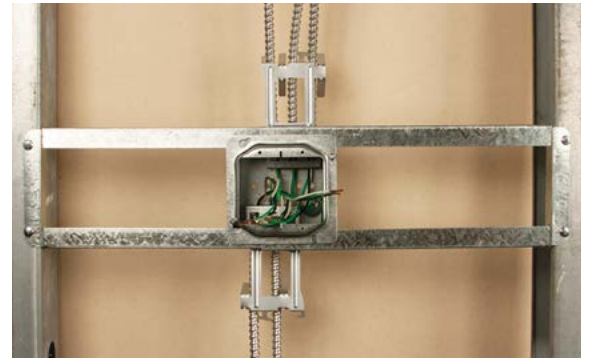
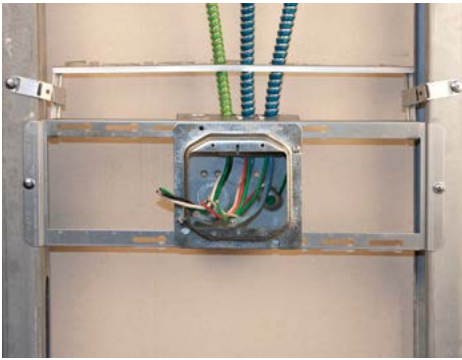


Eccentric knockout on the same side of the box as the STAB-IT connector



Accepts larger cables, including MC-PCS luminaire cables for smart building applications

Increase Productivity, Reduce SKUs, Reduce Work Site Waste



STAB-IT® II product line



CAT. NO.	DESCRIPTION	CU. IN. CAP.	CTN. QTY.	KNOCKOUTS		UPC-A
				SIDES	BOTTOM	
252S	4-11/16" Sq., 2-1/8" deep, (1) STAB-IT II connector, w/pigtail	42.0	25	(10) TKO	(1) 1/2", (1) TKO	050169995469
252SCM	4-11/16" Sq., 2-1/8" deep, (1) STAB-IT II connector, w/pigtail and Cable Management Clip	42.0	25	(10) TKO	(1) 1/2", (1) TKO	050169995476
252MS	4-11/16" Sq., 2-1/8" deep, (1) STAB-IT II connector, M bracket for stud mounting, w/pigtail	42.0	25	(10) TKO	(1) 1/2", (1) TKO	050169995483
252MSCM	4-11/16" Sq., 2-1/8" deep, (1) STAB-IT II connector, M bracket for stud mounting, w/pigtail and Cable Management Clip	42.0	25	(10) TKO	(1) 1/2", (1) TKO	050169995490
254S	4-11/16" Sq., 2-1/8" deep, (2) STAB-IT II connectors, w/pigtail	42.0	25	(8) TKO	(1) 1/2"	050169995506
254SCM	4-11/16" Sq., 2-1/8" deep, (2) STAB-IT II connectors, w/pigtail and Cable Management Clips	42.0	25	(8) TKO	(1) 1/2"	050169995513

1 STAB-IT II connector - 3 cable openings. 2 STAB-IT II connectors = 6 cable openings

CABLE TYPES AND RANGES FOR STAB-IT® II CLAMP

CABLE TYPE	CABLE RANGE	CABLE DIAMETER RANGE
AC STEEL	14-2, 14-3 14-4, 12-2, 12-3, 12-4, 10-2, 10-3	0.44" - 0.62"
HCF AC STEEL	12-2, 12-3, 10-2, 10-3	
AC ALUMINUM	14-2, 14-3, 14-4, 12-2, 12-3, 12-4, 10-2, 10-3	0.42" - 0.62"
HCF AC ALUMINUM	12-2, 12-3, 12-4, 10-2, 10-3	
MC STEEL	14-2, 14-3, 14-4, 12-2, 12-3, 12-4, 10-2, 10-3	0.38" - 0.62"
MCI-A STEEL	14-2, 12-2, 12-3, 12-4, 10-2, 10-3	
HCF MCI-A STEEL	12-2, 12-3, 10-2	0.38" - 0.62"
MC-PCS STEEL	12-2/16-2, 12-3/16-2, 10-2/16-2	
MC ALUMINUM	14-2, 14-3, 14-4, 12-2, 12-3, 12-4, 10-2, 10-3	0.38" - 0.62"
MCI-A ALUMINUM	14-2, 14-3, 14-4, 12-2, 12-3, 12-4, 10-2, 10-3	
HCF MCI-A ALUMINUM	12-2, 12-3, 12-4, 10-2, 10-3	0.38" - 0.62"
MC-PCS ALUMINUM	12-2/16-2, 12-3/16-2, 10-2/16-2	

3/8 TRADE SIZE FLEX. RWFMC CONDUIT STEEL & ALUMINUM
Anti Short Bushing Required

Cable Armor must comply with NEC 250.96

To install larger diameter cables (if needed) loosen up screw, insert cable, tighten up screw and push in cable until it snaps into place as shown on instructions.

To remove cable: Loosen up screw, pull spring clip away from cable and pull cable out.

See instruction sheet.

To install more cables use any of the knockouts with RACO® REDI-LOC® connector.



252MS and 252MSCM feature RACO's far-side support

A Box for Every Application

Original STAB-IT® product line



CAT. NO.	DESCRIPTION	CU. IN. CAP.	CTN. QTY.	KNOCKOUTS		UPC-A
				SIDES	BOTTOM	
232S	4" Sq., 2-1/8" Dp., (1) STAB-IT connector, w/pigtail	30.3	25	(6) 1/2", (3) 1/2"-3/4" TKO	(1) 1/2", (1) 1/2"-3/4" TKO	050169500705
232MS	4" Sq., 2-1/8" Dp., (1) STAB-IT connector, M bracket, w/pigtail, far-side support	30.3	25	(6) 1/2", (3) 1/2"-3/4" TKO	(1) 1/2", (1) 1/2"-3/4" TKO	050169500736
232SCM	4" Sq., 2-1/8" Dp., (1) STAB-IT connector, w/pigtail and Cable Management Clip	30.3	25	(6) 1/2", (3) 1/2"-3/4" TKO	(1) 1/2", (1) 1/2"-3/4" TKO	050169892329
232MSCM	4" Sq., 2-1/8" Dp., (1) STAB-IT connector, M bracket, w/pigtail, far-side support, and Cable Management Clip	30.3	25	(6) 1/2", (3) 1/2"-3/4" TKO	(1) 1/2", (1) 1/2"-3/4" TKO	050169922323
244S	4" Sq., 2-1/8" Dp., (2) STAB-IT connectors on top, w/pigtail	30.3	25	(6) 1/2", (3) 1/2"-3/4" TKO	(1) 1/2", (1) 1/2"-3/4" TKO	050169982440
244SCM	4" Sq., 2-1/8" Dp., (2) STAB-IT connectors on top, w/pigtail and (2) Cable Management Clips	30.3	25	(6) 1/2", (3) 1/2"-3/4" TKO	(1) 1/2", (1) 1/2"-3/4" TKO	050169962442
244MS	4" Sq., 2-1/8" Dp., (2) STAB-IT connectors on top, M bracket, w/pigtail, far-side support	30.3	25	(6) 1/2", (3) 1/2"-3/4" TKO	(1) 1/2", (1) 1/2"-3/4" TKO	050169992449
244MSCM	4" Sq., 2-1/8" Dp., (2) STAB-IT connectors on top, M bracket, w/pigtail, far-side support, and (2) Cable Management Clips	30.3	25	(6) 1/2", (3) 1/2"-3/4" TKO	(1) 1/2", (1) 1/2"-3/4" TKO	050169972441
248S	4" Sq., 2-1/8" Dp., (2) STAB-IT connectors, w/pigtail	30.3	25	(4) 1/2", (2) 1/2"-3/4" TKO	(1) 1/2", (1) 1/2"-3/4" TKO	050169500712
248HS	4" Sq., 2-1/8" Dp., (2) STAB-IT connectors, H bracket, w/pigtail, far-side support	30.3	25	(4) 1/2", (2) 1/2"-3/4" TKO	(1) 1/2", (1) 1/2"-3/4" TKO	050169501122
248MS	4" Sq., 2-1/8" Dp., (2) STAB-IT connectors, M bracket, w/pigtail, far-side support	30.3	25	(4) 1/2", (2) 1/2"-3/4" TKO	(1) 1/2", (1) 1/2"-3/4" TKO	050169500798
518S	3" x 2" x 2-1/2" Dp., old work switch box (1) STAB-IT connector, w/pigtail	12.5	25	—	(1) 1/2"	050169500781
523S	3" x 2" x 2-1/2" Dp., old work switch box (1) STAB-IT connector, w/old work clips, w/pigtail	12.5	25	—	(1) 1/2"	050169500514
524S	3" x 2" x 2-1/2" Dp., old work switch box (1) STAB-IT connector, w/TS bracket, w/pigtail	12.5	50	—	(1) 1/2"	050169500729
618S	3" x 2" x 3-1/2" Dp., old work switch box (1) STAB-IT connector, w/pigtail	18.0	25	—	(1) 1/2"	050169966181
623S	3" x 2" x 3-1/2" Dp., old work switch box (1) STAB-IT connector, w/old work clips, w/pigtail	18.0	25	—	(1) 1/2"	050169966235
624S	3" x 2" x 3-1/2" Dp., old work switch box (1) STAB-IT connector, w/TS bracket, w/pigtail	18.0	25	—	(1) 1/2"	050169966242

1 STAB-IT connector can accommodate up to 2 cables. 2 STAB-IT connectors can accommodate up to 4 cables



RACO
3902 W. Sample St.
South Bend, IN 46619
574-234-7151
www.hubbell.com/raco/en

